

ATTACHMENT

2.

OFFICIAL MINUTES OF THE
CITY OF KEWAUNEE
PLANNING COMMISSION

Kewaunee Municipal Building, 401 Fifth Street

Thursday, March 24, 2022 – 6:30 p.m.

Present: Laura Gerold, Claude Stangel, Dan Stangel, John Mastalir and Jeff Welhouse

Others: Administrative Assistant Karen Muchowski, Interim Public Work Director Nathan Seiler and Council Person Zimmerman

1. Call Meeting to Order/Roll Call:

Chairperson Gerold called the Planning Commission Meeting to order at 6:30 p.m.

2. Approve Minutes from the February 17, 2022, Planning Commission Meeting:

Noted changes: on page 2 number 8 change to state “Chairperson Gerold stated that she spoke with Amy Minser from the DNR and she told chairperson Gerold”

C. Stangel moved and D. Stangel seconded the motion to approve the February 17, 2022 Planning Commission Meeting minutes with noted changes. Motion carried unanimously.

3. Public Comment

None

4. Review: Becky Kulhanek and Branden Ruatti’s request to rezone and Amend the Comprehensive Plan to rezone 1520 River Road (Parcel # 241-00330-0060) from Agricultural A-1 to Single Family Residential R-1.

Commissioner Mastalir asked if this was going to be well water & septic and if it was, did it perk. Administrative Assistant confirmed to Commissioner Mastalir that it would be well water and septic as River Road was not hooked up for city water and sewer.

5. Conduct Public Hearing/Comment on Rezoning Application and Amendment to the Comprehensive Plan by Becky Kulhanek and Branden Ruatti.

Chairperson Gerold opened public hearing at 6:35 p.m.

Public Comments:

Council Person Zimmerman, 515 Dodge Street, stated that she has known Becky Kulhanek and Branden Ruatti for a while and was asked to speak on their behalf as they were out of town. Council Person Zimmerman addressed Commissioner Mastalir's concerns about the perk test and stated that the test had been done in March 2021 and all came back ok. She also stated that the couple was looking to make this their forever home and asked that the Plan Commission grant their request to rezone and change the Comp Plan.

6. Close Public Hearing/Comment on Rezoning Application and Amendment to the Comprehensive Plan by Becky Kulhanek and Branden Ruatti.

Chairperson Gerold closed public hearing at 6:37 p.m.

7. Discussion/Action

D. Stangel moved and Welhouse seconded the motion to approve the rezoning request to change from Agricultural A-1 to Single Family R-1 with the recommended changes to be moved on to Council for Approval. Motion carried unanimously.

D. Stangel moved and Welhouse seconded the motion to approve the Amend the Comprehensive Plan with the recommended changes to be moved on to Council for Approval. Motion carried unanimously.

8. Proposed CSM for 1408 Dodge Street:

Seeing as how there was no information supplied with the CSM, Commissioners asked that we get more information as to why they wanted the lot split in two. Chairperson Gerold and Commissioner Stangel stated that they would reach out for more information to be supplied at the next Plan Commission meeting. Administrative Assistant Muchowski to forward email from Greg Salentine at Cedar Corp to them.

D. Stangel moved and Mastalir second the motion to table this until the next meeting to obtain more information. Motion carried unanimously.

9. Discussion Proposed Parking Stall Markings:

Went over DOT regulations regarding parking stalls and Interim Public Works Director Nathan Seiler's suggestions on marking of parking stalls. Commissioners stated that they wanted parking stalls to be 10' wide x 20' long. They also stated that they like the suggestions from Nathan regarding the corners of Ellis and Main and Ellis and 42. Suggestions on where we could put handicap parking was also looked at.

Commissioner D. Stangel was going to work with Interim Public Works Director Seiler regarding those.

10. Other Business:

Next meeting will be April 28, 2022

11. Adjourn:

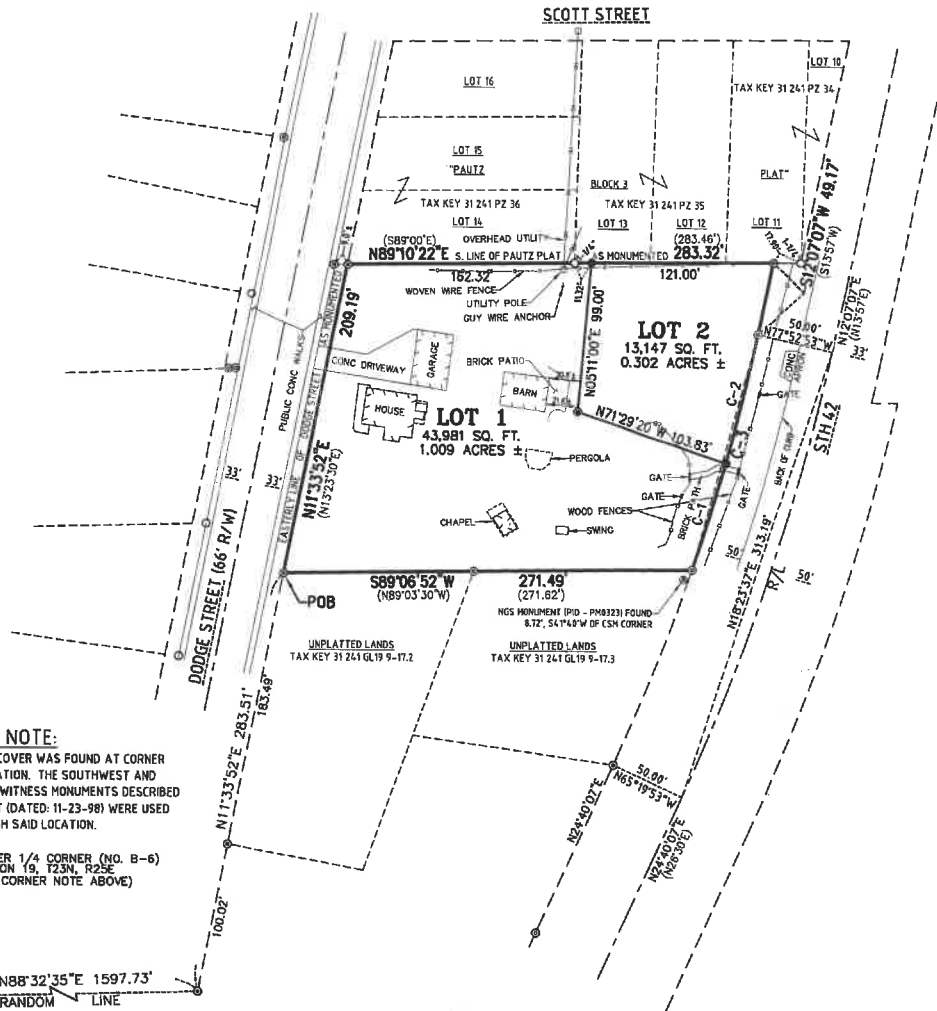
C. Stangel moved and D. Stangel seconded to adjourn the meeting at 7:23 p.m. Motion carried unanimously.

ATTACHMENT

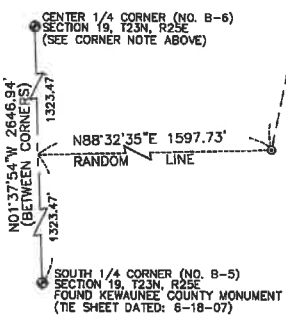
4.

CERTIFIED SURVEY MAP NO. _____

BEING PART OF GOVERNMENT LOT 2, SECTION 19,
TOWNSHIP 23 NORTH, RANGE 25 EAST,
CITY OF KEWAUNEE, KEWAUNEE COUNTY, WISCONSIN



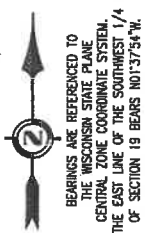
CORNER NOTE:
A MANHOLE COVER WAS FOUND AT CORNER NO. B-6 LOCATION. THE SOUTHWEST AND SOUTHEAST WITNESS MONUMENTS DESCRIBED ON THE SHEET (DATED: 11-23-98) WERE USED TO ESTABLISH SAID LOCATION.



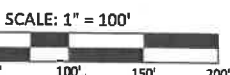
CURVE TABLE

CURVE ID.	RADIUS	DELTA	ARC LENGTH	CHORD BEARING	CHORD LENGTH	BEARING IN	BEARING OUT
C-1	1382.69	3°06'18"	74.93'	S17°18'38"W	74.92'		
C-2	1382.69	3°39'22"	87.83	S13°56'18"W	87.81'		
C-3	1382.69 (1382.70)	6°44'40"	162.76	S15°29'27"W (S17°19'20"W)	162.67'	S12°07'07"W	S18°51'47"W
R/L	1432.69 (1432.69)	12°33'00" (12°33')	313.81 (313.7)	N18°23'37"E	313.19'	N24°40'07"E (N26°30'E)	N12°07'07"E (N13°57'E)

- LEGEND**
- ⊕ PUBLIC LAND SURVEY SYSTEM CORNER (AS NOTED)
 - SET 3/4" x 18" STEEL REBAR WEIGHING 1.502 POUNDS/LINEAL FOOT
 - FOUND 1-1/4" STEEL REBAR
 - FOUND 3/4" STEEL REBAR
 - FOUND 1" STEEL PIPE
 - () RECORDED BEARING AND/OR DISTANCE
 - EXISTING PUBLIC RIGHT-OF-WAY LINE
 - EXISTING PROPERTY AND/OR LOT LINE
 - POB POINT OF BEGINNING
 - CONC CONCRETE PAVEMENT



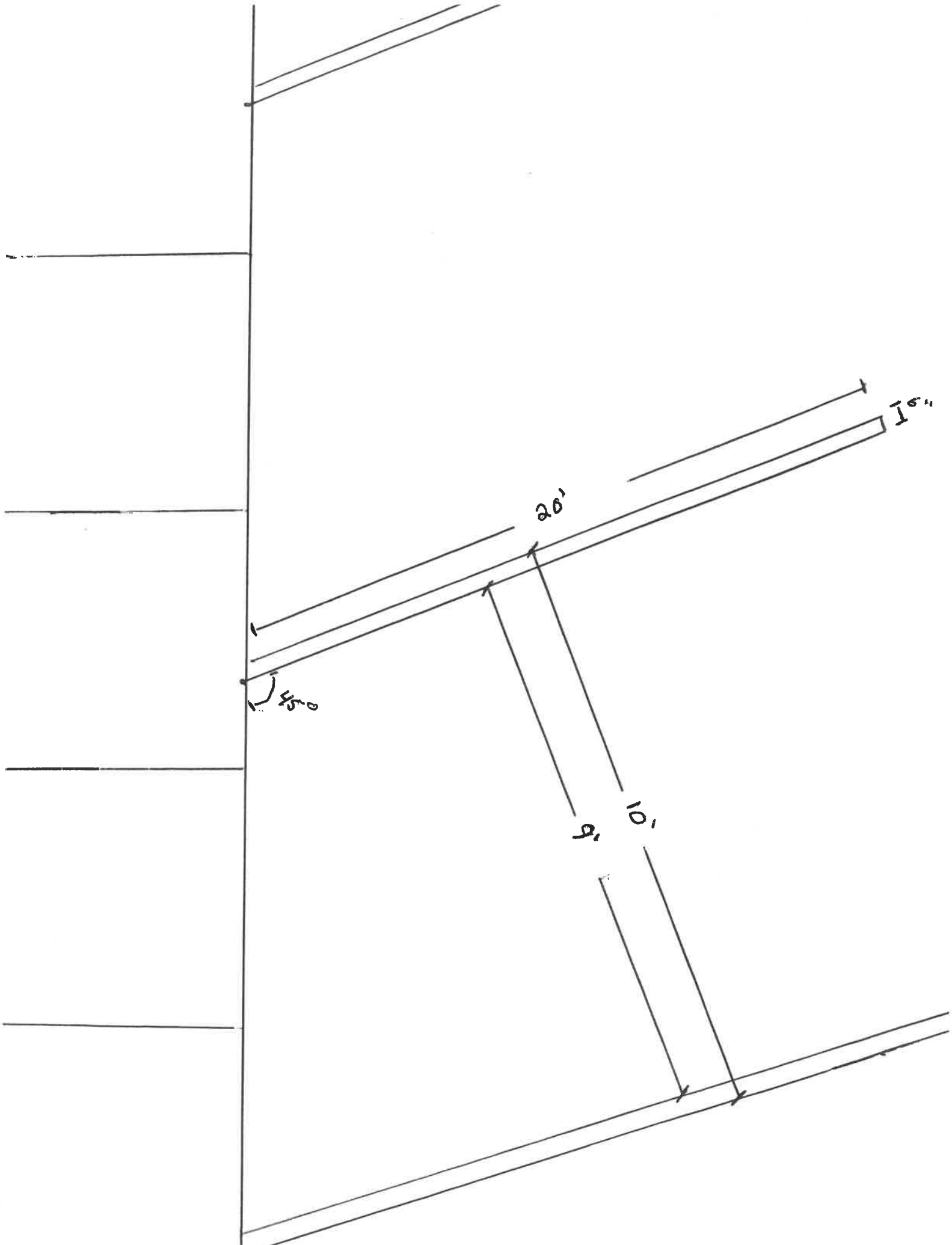
PREPARED FOR:
KATHLEEN S. HOWLETT-DESPOT
1139 W. OAKWOOD
OAK CREEK, WI 53154

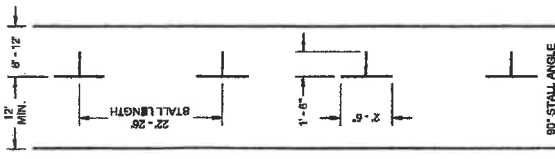


GREG J. SALENTINE, PLS
CEDAR CORPORATION
1695 BELLEVUE STREET
GREEN BAY, WISCONSIN 54311
PHONE 920-491-9081

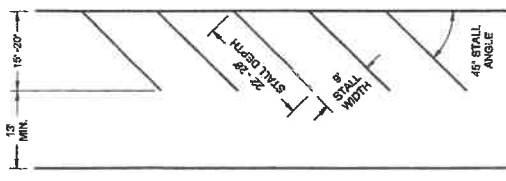
ATTACHMENT

5.

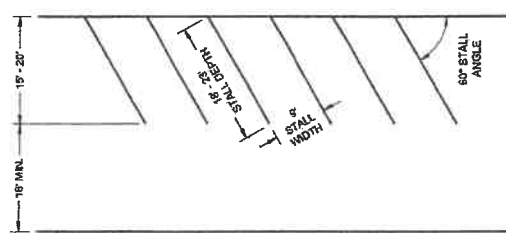




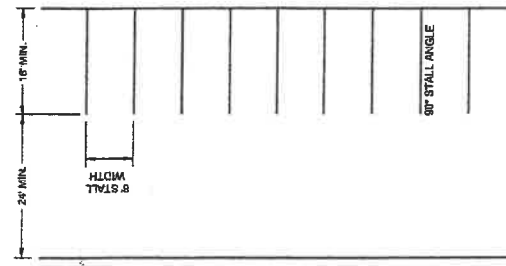
PARALLEL PARKING
90° STALL ANGLE



ANGLED PARKING
(ANGLED PARKING IS NOT ALLOWED ON STATE HIGHWAYS UNLESS A DESIGN JUSTIFICATION HAS BEEN COMPLETED.)
45° STALL ANGLE



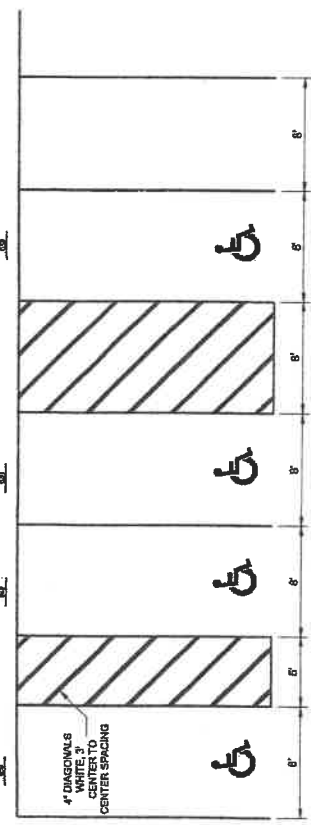
ANGLED PARKING
60° STALL ANGLE



PARKING LOTS
80° STALL ANGLE

GENERAL NOTES
ALL LINES 4" WHITE (UNLESS OTHERWISE NOTED)
LAST PARKING STALL IS A MINIMUM OF 18' FROM THE CROSSWALK.

LEGEND
SIGN ON PERMANENT SUPPORT



ACCESSIBLE
VAN ACCESSIBLE

PARKING STALL MARKING

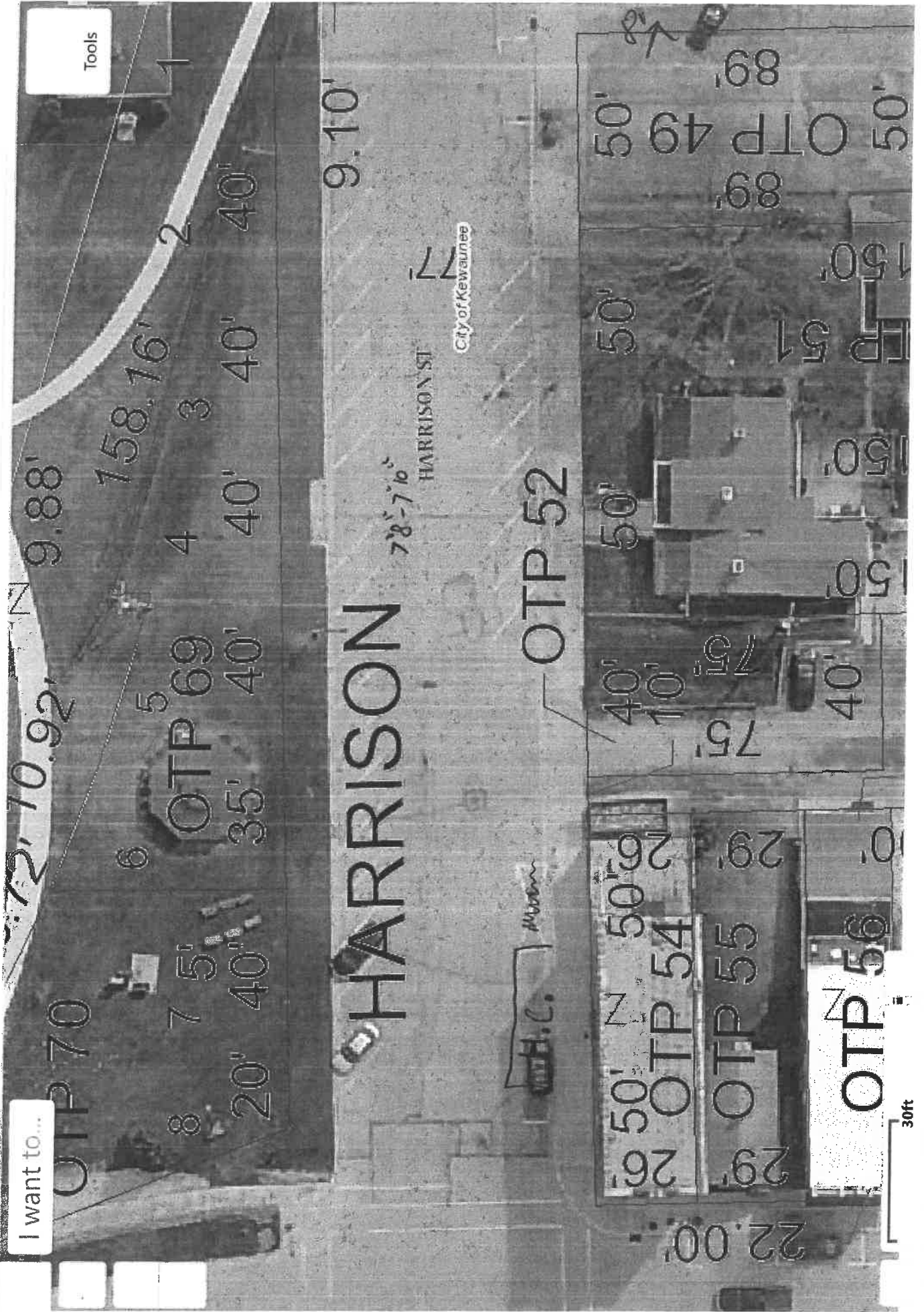
STATE OF WISCONSIN
DEPARTMENT OF TRANSPORTATION

APPROVED _____
DATE August 2016

RS Mathew French
STATE ENGINEERING
ENGINEER

I want to...

Tools





Search... Sign in

Home Markup Tool Labels X

- Pan
- Point
- Query
- Filter
- Print
- Export
- Share
- Upload Data
- Google Street View
- Taxkey
- Address
- Owner

Navigation Find Data External Search

